

© 2006 ENGINEERED PLASTICS
 CONFIDENTIAL AND PROPRIETARY DOCUMENT
 ANY ONE OR MORE OF THE FOLLOWING
 PATENTS MAY APPLY
 U. S. PATENT NO. 5,303,669, 5,775,835,
 6,449,790, AND 6,895,622 BS
 C.D.N. PATENT NO. 2,032,532, 2,070,984
 US PATENTS PENDING.
 © KENNETH E. SZEKELY

MATERIAL LIST

#	DESCRIPTION	PART No:	QTY
1	ARMOR-TILE	ADD-C-504-2-YW	1
2	HEXAGONAL EMBEDMENT ANCHOR	ANCHORS	8
3	TAMPER RESISTANT S.S. FLAT HEAD HEX SOCKET SCREW	SCREWS	8

NOTE:
 ANCHOR ARE INCLUDED AND ASSEMBLED ON TILE.

No:	DATE	REVISION	APPR.

SCALE

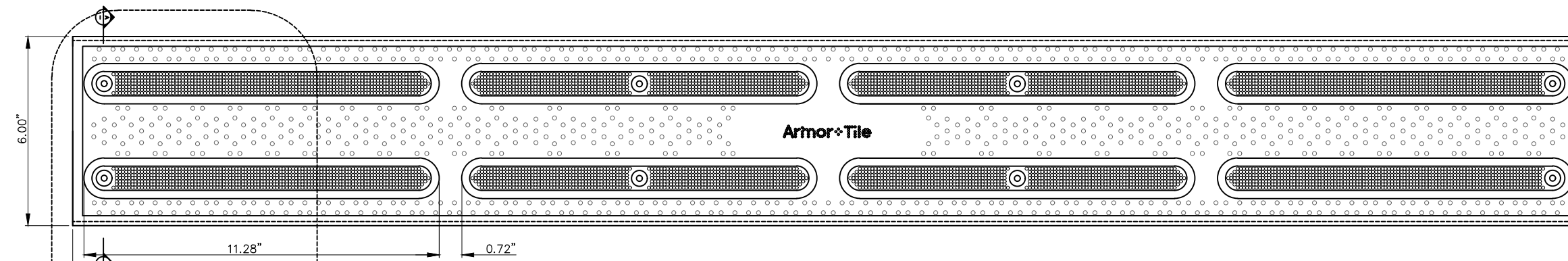
DESIGNED	BY K.S.	DATE 08/90
DRAWN	M.T.	30/11/2018
CHECKED	D.G.	

PROJECT MANAGER	
TRADE DETECTABLE WARNING SURFACE	PART No: ADD-C504-2-YW
MATERIAL Herculite Polymer Composite	

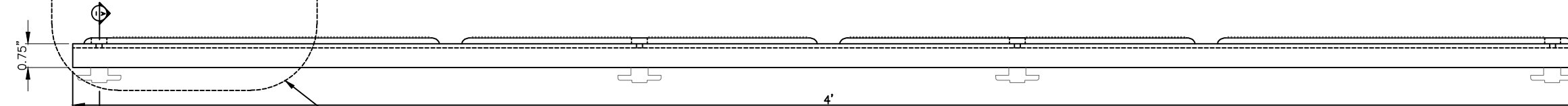
SUBJECT
Armor-Tile™ ADA
 SOUND AMPLIFYING DETECTABLE/TACTILE
 WARNING SURFACE TILE

PROJECT
Armor-Tile™
 DETECTABLE/TACTILE
 DIRECTIONAL TILE
 6" x 48" CAST IN PLACE REPLACEABLE
 BAR TILE
 PLANS AND DETAILS

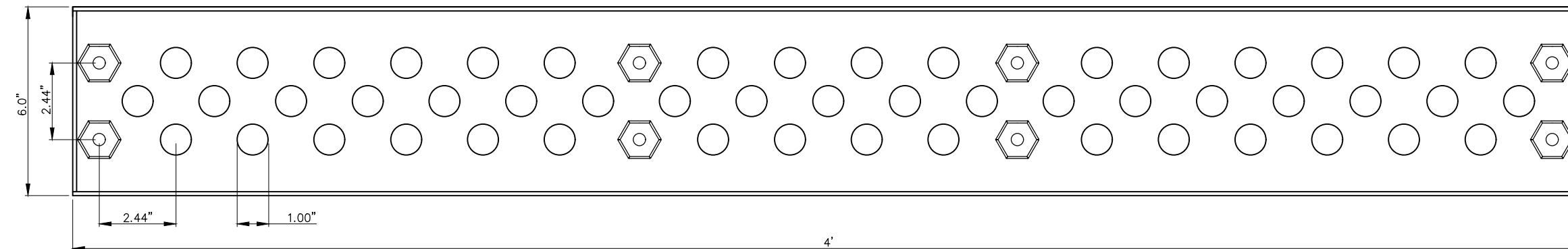
DRAWING No: ADD-C504-2-YW	REV. No: 0
------------------------------	---------------



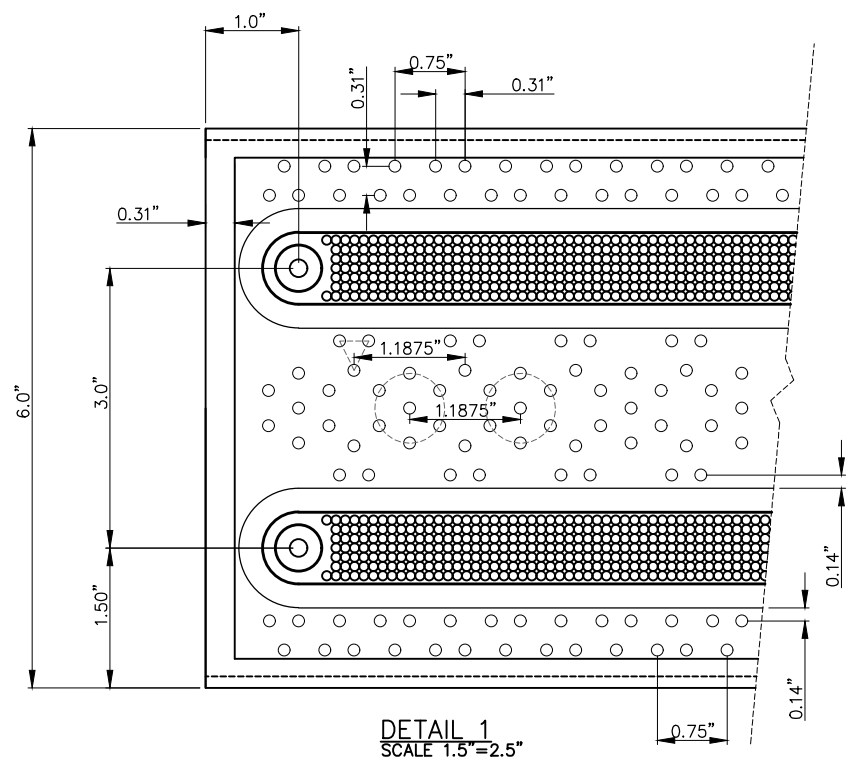
PLAN - TILE
 SCALE 1.5"=2.5"



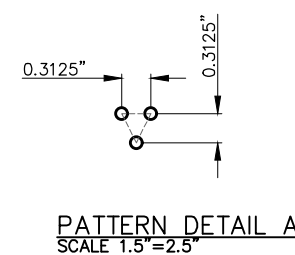
SIDE - TILE
 SCALE 1.5"=2.5"



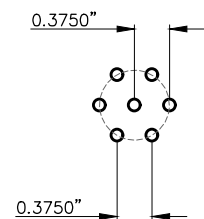
REFLECTED PLAN
 SCALE 1.5"=2.5"



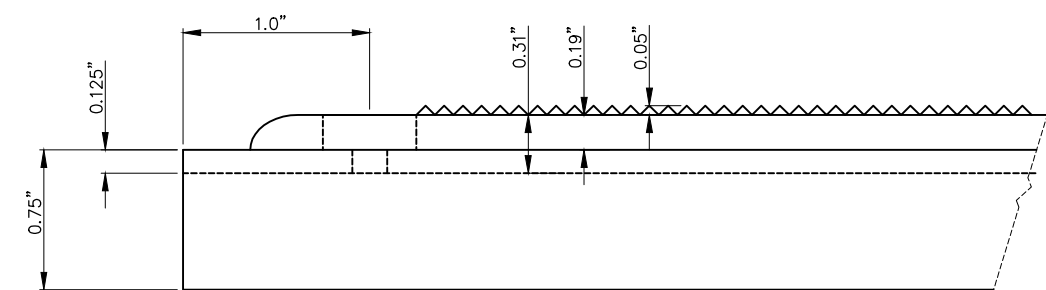
DETAIL 1
 SCALE 1.5"=2.5"



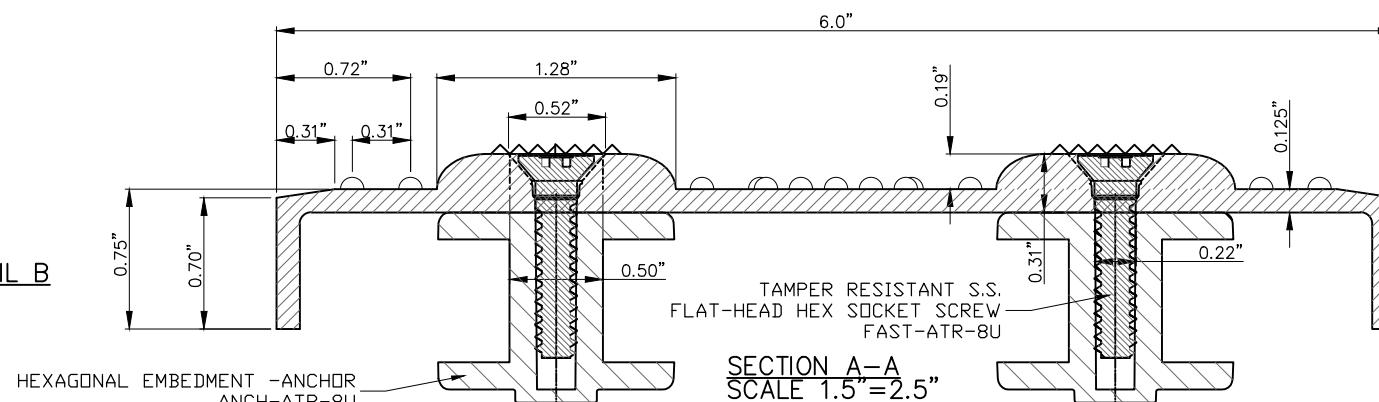
PATTERN DETAIL A
 SCALE 1.5"=2.5"



PATTERN DETAIL B
 SCALE 1.5"=2.5"



DETAIL 2
 SCALE 1.5"=2.5"



SECTION A-A
 SCALE 1.5"=2.5"