

© 2007 ENGINEERED PLASTICS  
 CONFIDENTIAL AND PROPRIETARY DOCUMENT  
 ANY ONE OR MORE OF THE FOLLOWING  
 PATENTS MAY APPLY  
 U.S. PATENT NO. 5,303,669 5,775,835  
 6,449,790 AND 6,895,622 B2  
 C.D.N. PATENT NO. 2,032,532 2,070,984  
 US PATENTS PENDING.  
 © KENNETH E. SZEKELY

MATERIAL LIST

ITEM	DESCRIPTION	PART NO.	QTY
1	ARMOR TILE D.D.T.	ADD-505	1
2	CONCEALED CAPS	AT-1100-CC	12
3	SS FASTENERS	5/50	12

NOTE: COLOR BLACK CONFIRMING TO THE  
 LATEST FEDERAL COLOR NUMBER STD

No.	DATE	REVISION	APPR.
1	05/05/15	FLANGE REVISED	D.D.
0	04/27/01	ISSUED	K.S.

SCALE

N.T.S

DESIGNED	BY	DATE
	K.E.S.	08/90
DRAWN	M.D.	
CHECKED		

PROJECT MANAGER	
TRADE DETECTABLE WARNING SURFACE	PART NO. SEE MATERIAL LIST

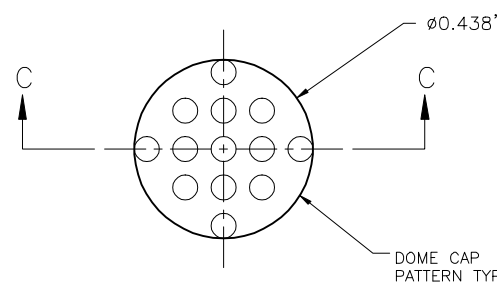
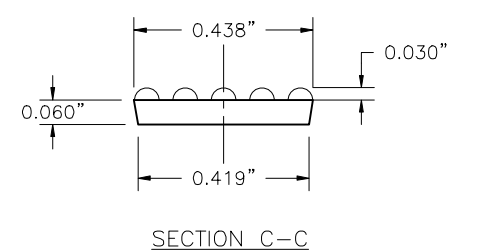
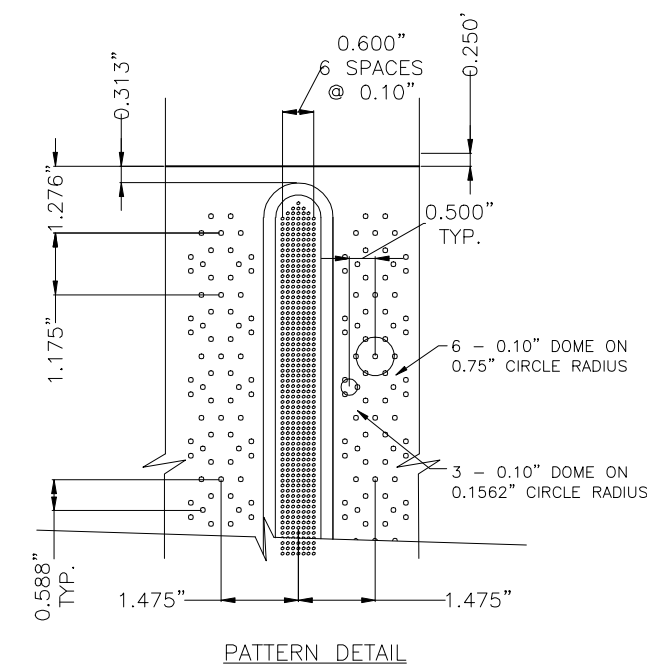
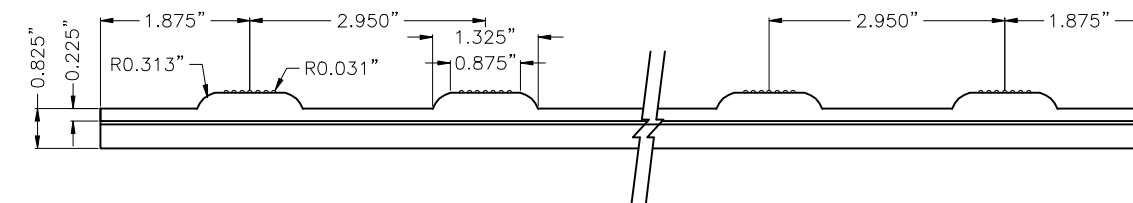
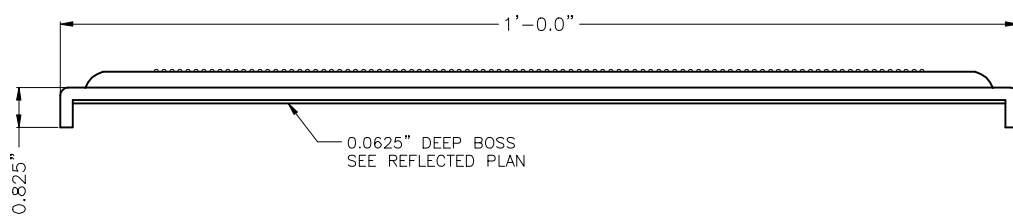
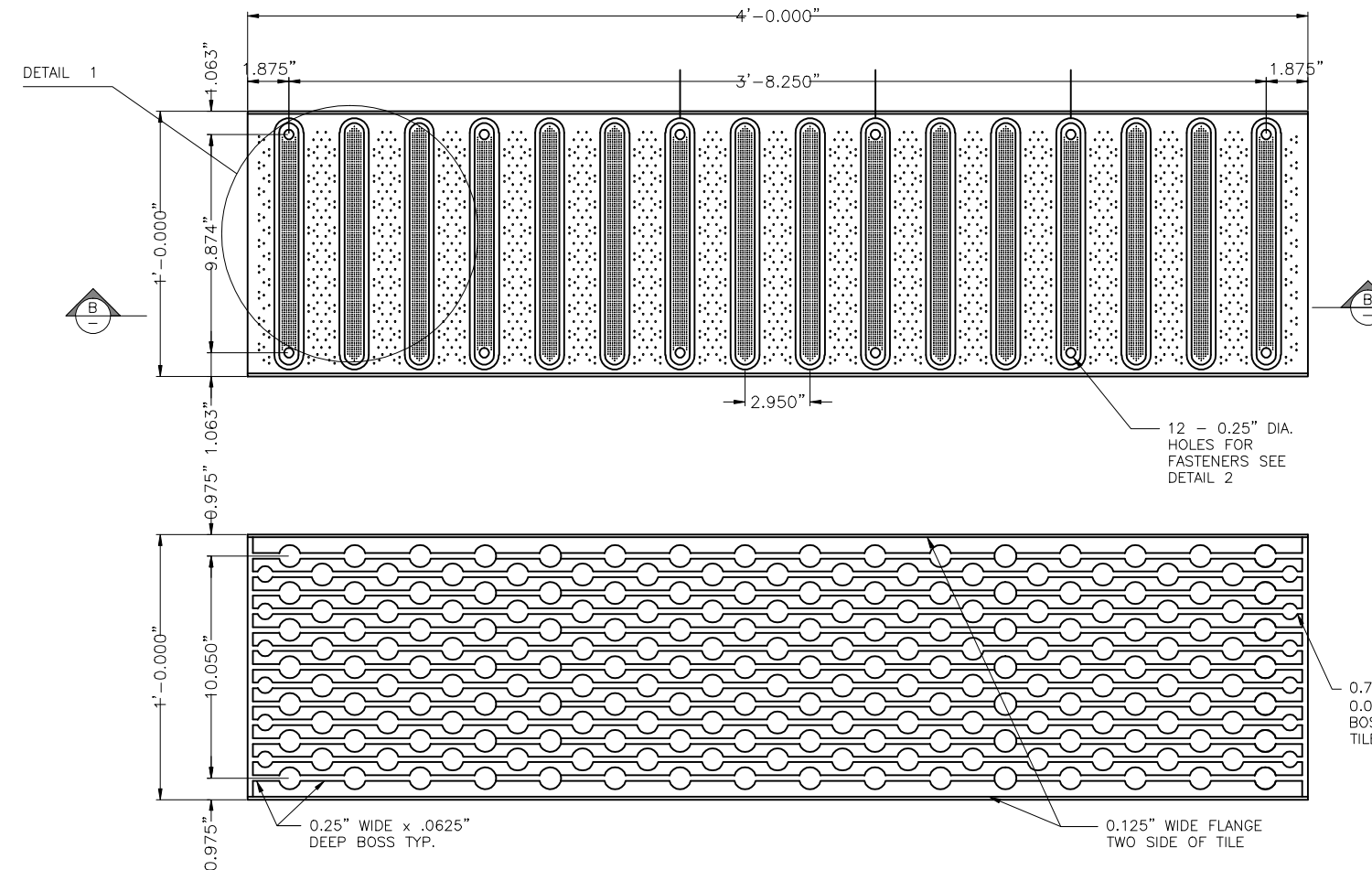
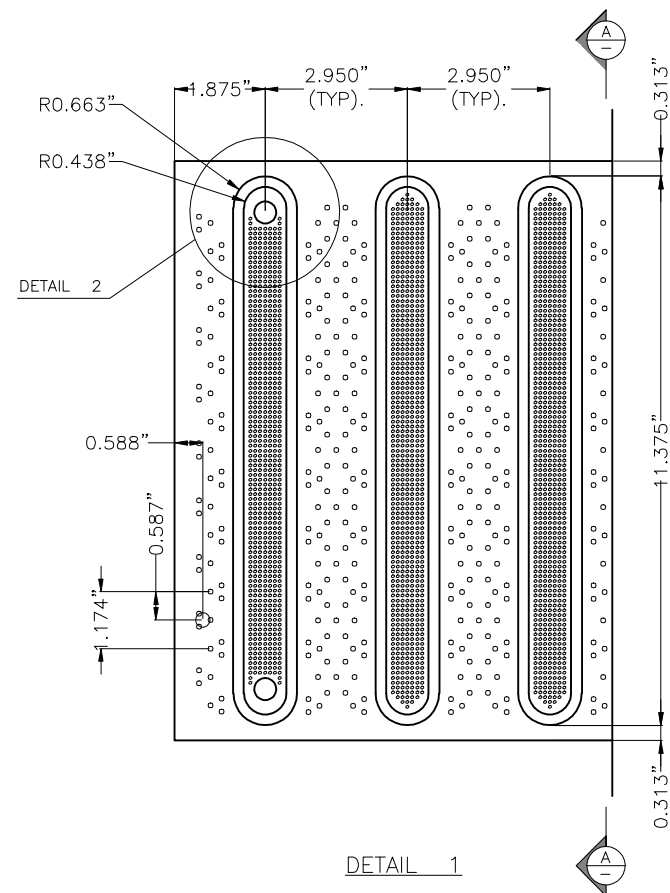
MATERIAL  
 VITRIFIED POLYMER COMPOSITE

SUBJECT  
**ArmorTile**  
 TACTILE TILE  
 DETECTABLE DIRECTIONAL WARNING  
 SURFACE SYSTEM

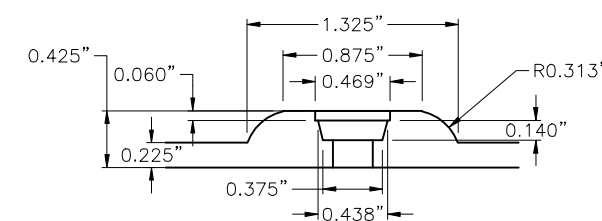
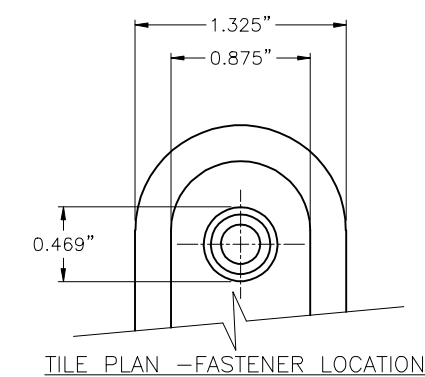
PROJECT

DETECTABLE DIRECTIONAL  
 SURFACE TILE  
 PLANS AND DETAILS  
 MATERIAL DRAWING

DRAWING NO. ADD-505 (12x48)	REV. NO. 0
--------------------------------	---------------



PLAN-TOP OF CAP  
 CONCEALED CAP DETAIL  
 PART NO. AT-1100-CC 12 REQ' RER TILE



TILE SECTION FASTENER LOCATION  
 DETAIL 2  
 CONCEALED MECHANICAL FASTENING SYSTEM