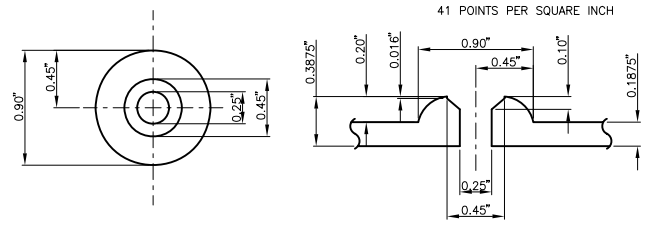


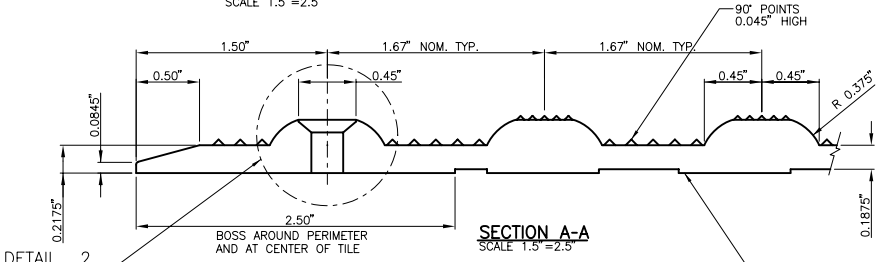
**PLAN - TILE**  
SCALE 1.25"=1'-0"

2.50" WIDE x 0.03" DEEP BOSS AT UNDERSIDE OF TILE FOR STRUCTURAL ADHESIVE AT PERIMETER AND THROUGH CENTER OF TILE



TILE PLAN TRUNCATED DOME FASTENER LOCATION  
TILE SECTION TRUNCATED DOME FASTENER LOCATION

**DETAIL 2**  
SCALE 1.5"=2.5"



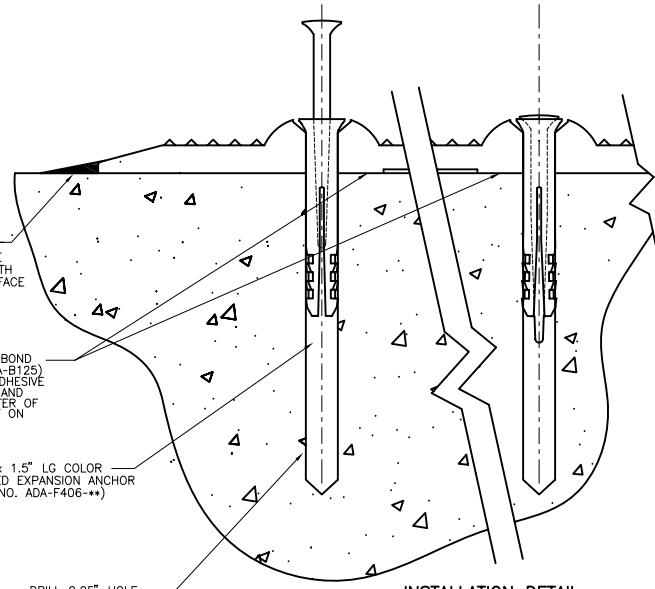
**SECTION A-A**  
SCALE 1.5"=2.5"

APPLY ARMOR-SEAL (PART NO. ADA-S125) PERIMETER SEALANT AT PERIMETER OF TILE AFTER INSTALLING FASTENERS. TOOL SMOOTH TO BLEND TILE EDGE WITH ADJACENT SURFACE

APPLY ARMOR-BOND (PART NO. ADA-B125) STRUCTURAL ADHESIVE AT PERIMETER AND THROUGH CENTER OF TILE EACH WAY ON BOSSED AREAS

0.25" x 1.5" LG COLOR MATCHED EXPANSION ANCHOR (PART NO. ADA-F406-\*\*) DRILL 0.25" HOLE TO 3.5" DEEP

SOUND-ON-CANE AMPLIFYING SYSTEM TYPICAL THROUGHOUT 0.03" x 0.875" DIA. TYP @ 1.5"/1.75" O/C OFFSET



**INSTALLATION DETAIL AT TILE PERIMETER**  
NOT TO SCALE



© 2006 ENGINEERED PLASTICS  
CONFIDENTIAL AND PROPRIETARY DOCUMENT  
ANY ONE OR MORE OF THE FOLLOWING PATENTS MAY APPLY  
U. S. PATENT NO. 5,303,669, 5,775,835, 6,449,790, AND 6,895,622 BS  
C.D.N. PATENT NO. 2,032,532, 2,070,984  
US PATENTS PENDING.  
© KENNETH E. SZEKELY

MATERIAL LIST			
#	DESCRIPTION	PART No:	QTY
1	ARMOR-TILE	ADA-S-2460	1
2	EXPANSION ANCHOR	ADA-FAST	10
3	ARMOR-BOND	ADA-ADHE-EA	1
4	ARMOR-SEAL	ADA-SEAL-EA	1

\*\* COLOR CODE  
YELLOW (YW), RED (RD), BLACK (BK), DARK GREY (DG), LIGHT GREY (LG), WHITE (WH), OCRE YELLOW (OC), BLUE (BL), COLONIAL RED (CR)  
CUSTOM COLORS AVAILABLE

No:	DATE	REVISION	APPR.

SCALE		
DESIGNED	BY	DATE
	K.S.	08/90
DRAWN		
	D.G.	
CHECKED		

PROJECT MANAGER	
TRADE	PART No:
DETECTABLE WARNING SURFACE	ADA-S-2460-**
MATERIAL	
VITRIFIED POLYMER COMPOSITE	

**Armor-Tile ADA**  
SOUND AMPLIFYING DETECTABLE/TACTILE WARNING SURFACE TILE

**Armor-Tile™**  
DETECTABLE/TACTILE WARNING SURFACE TILE  
24" x 60" SURFACE APPLIED INLINE DOME TACTILE TILE PLANS AND DETAILS

DRAWING No:	REV. No:
ADA-S-2460	0