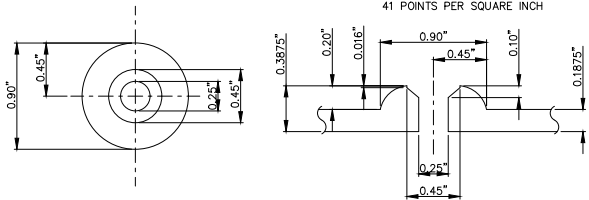


DETAIL 1
SCALE 1.5"=2.5"

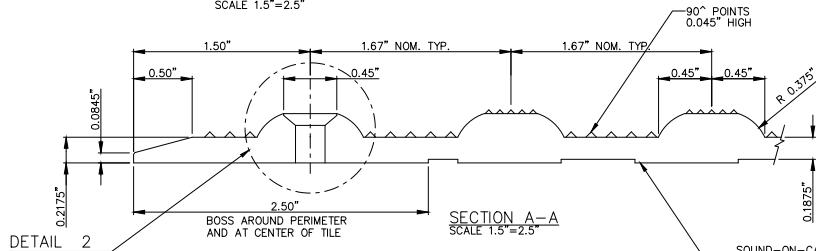
FIELD LEVEL MICRO-TEXTURE
41 POINTS PER SQUARE INCH



TILE PLAN
TRUNCATED DOME FASTENER LOCATION

TILE SECTION
TRUNCATED DOME FASTENER LOCATION

DETAIL 2
SCALE 1.5"=2.5"

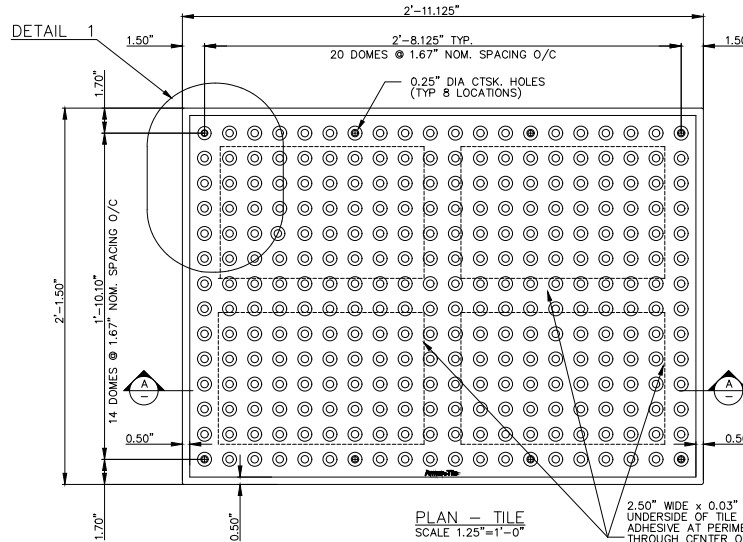


DETAIL 2

BOSS AROUND PERIMETER
AND AT CENTER OF TILE

SECTION A-A
SCALE 1.5"=2.5"

SOUND-ON-CANE AMPLIFYING
SYSTEM TYPICAL THROUGHOUT
0.03" x 0.875" DIA. TYP.
@ 1.5"/1.75" O/C OFFSET



PLAN - TILE
SCALE 1.25"=1'-0"

APPLY ARMOR-SEAL (PART NO. ADA-S125)
PERIMETER SEALANT AT PERIMETER OF TILE
AFTER INSTALLING FASTENERS. TOOL SMOOTH
TO BLEND TILE EDGE WITH ADJACENT SURFACE

APPLY ARMOR-BOND (PART NO. ADA-B125)
STRUCTURAL ADHESIVE
AT PERIMETER AND
THROUGH CENTER OF
TILE EACH WAY ON
BOSSED AREAS

0.25" x 1.5" LG COLOR
MATCHED EXPANSION ANCHOR
(PART NO. ADA-F406-**)

DRILL 0.25" HOLE
TO 3.5" DEEP

INSTALLATION DETAIL
AT TILE PERIMETER
NOT TO SCALE



MATERIAL LIST

#	DESCRIPTION	PART No:	QTY
1	ARMOR-TILE	ADA-S-2436-**	1
2	EXPANSION ANCHOR	ADA-FAST	8
3	ARMOR-BOND	ADA-ADHE-EA	1
4	ARMOR-SEAL	ADA-SEAL-EA	1

** COLOR CODE
YELLOW (YW), RED (RD), BLACK (BK),
DARK GRAY (DG), LIGHT GRAY (LG),
WHITE (WH), OCHRE YELLOW (OC),
BLUE (BL), COLONIAL RED (CR)
CUSTOM COLORS AVAILABLE

No:	DATE	REVISION	APPR.

SCALE

DESIGNED	BY	DATE
	K.S.	
DRAWN		
	D.G.	07/15/2024
CHECKED		

PROJECT MANAGER

TRADE	PART No:
DETECTABLE WARNING SURFACE	ADA-S-2436-**

MATERIAL
FIBERGLASS REINFORCED POLYMER COMPOSITE
SUBJECT

Armor-Tile™ ADA
SOUND AMPLIFYING DETECTABLE/TACTILE
WARNING SURFACE TILE

PROJECT

Armor-Tile™
DETECTABLE/TACTILE
WARNING SURFACE TILE
24" x 36" SURFACE APPLIED
INLINE DOME TACTILE TILE
PLANS AND DETAILS

DRAWING No:	REV. No:
ADA-S-2436	0