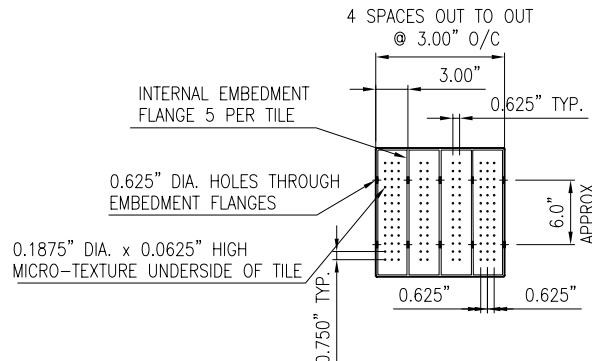
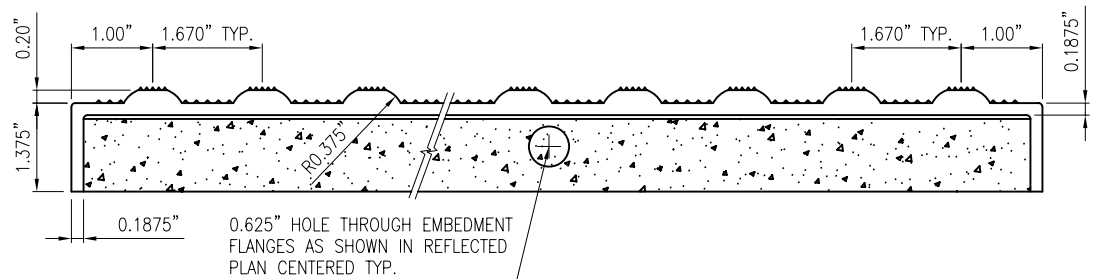


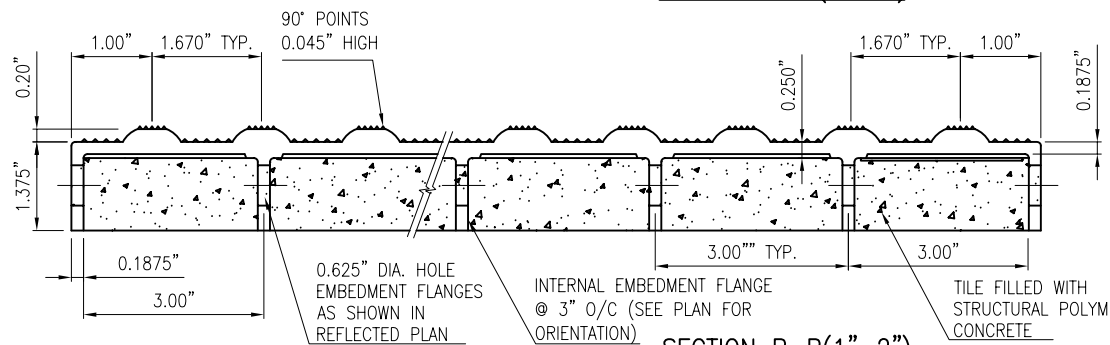
PLAN (1"=1'-0")



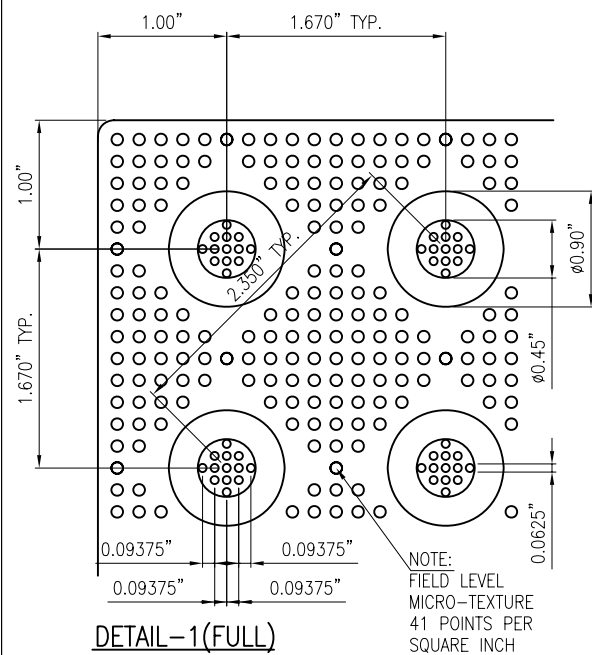
REFLECTED PLAN (1"=1'-0")



SECTION A-A (1"=2")



SECTION B-B (1"=2")



DETAIL-1 (FULL)

NOTE:
FIELD LEVEL
MICRO-TEXTURE
41 POINTS PER
SQUARE INCH

WWW.Armor-Tile.COM

EP ENGINEERED PLASTICS

© 2006 ENGINEERED PLASTICS
CONFIDENTIAL AND PROPRIETARY DOCUMENT
ANY ONE OR MORE OF THE FOLLOWING
PATENTS MAY APPLY
U. S. PATENT NO. 5,303,669, 5,775,835,
6,449,790, AND 6,895,622 BS
C.D.N. PATENT NO. 2,032,532, 2,070,984
US PATENTS PENDING.
© KENNETH E. SZEKELY

MATERIAL LIST

#	DESCRIPTION	PART No:	QTY
1	ARMOR-TILE	ADA-P-1212-**	1

** COLOR CODE
YELLOW (YW), RED (RD), BLACK (BK),
DARK GREY (DG), LIGHT GREY (LG),
WHITE (WH), OCRE YELLOW (OC),
BLUE (BL), COLONIAL RED (CR)
CUSTOM COLORS AVAILABLE

No:	DATE	REVISION	APPR.

SCALE

DESIGNED	BY	DATE
	K.S.	08/90
DRAWN	BY	DATE
	D.G.	2/22/2006
CHECKED	BY	DATE

PROJECT MANAGER

TRADE	PART No:
DETECTABLE WARNING SURFACE	ADA-P-1212-**

MATERIAL
VITRIFIED POLYMER COMPOSITE

SUBJECT

Armor-Tile ADA
SOUND AMPLIFYING DETECTABLE/TACTILE
WARNING SURFACE TILE

PROJECT

Armor-Tile™
DETECTABLE/TACTILE
WARNING SURFACE TILE
12" x 12" MODULAR PAVER
INLINE DOME TACTILE TILE
PLANS AND DETAILS

DRAWING No:	REV. No:
ADA-P-1212	0