

© 2006 ENGINEERED PLASTICS  
 CONFIDENTIAL AND PROPRIETARY DOCUMENT  
 ANY ONE OR MORE OF THE FOLLOWING  
 PATENTS MAY APPLY  
 U. S. PATENT NO. 5,303,669, 5,775,835,  
 6,449,790, AND 6,895,622 B5  
 C.D.N. PATENT NO. 2,032,532, 2,070,984  
 US PATENTS PENDING.  
 © KENNETH E. SZEKELY

MATERIAL LIST

#	DESCRIPTION	PART No.	QTY
1	ARMOR-TILE	ADA-C-GUID	1

\*\* COLOR CODE  
 YELLOW (YV), RED (RD), BLACK (BK),  
 DARK GREY (DG), LIGHT GREY (LG),  
 WHITE (WH), OCRE YELLOW (OY),  
 BLUE (BL), COLOMIAL RED (CR),  
 CUSTOM COLORS AVAILABLE

No.	DATE	REVISION	APPR.

DESIGNED	BY	DATE
	K.S.	08/90

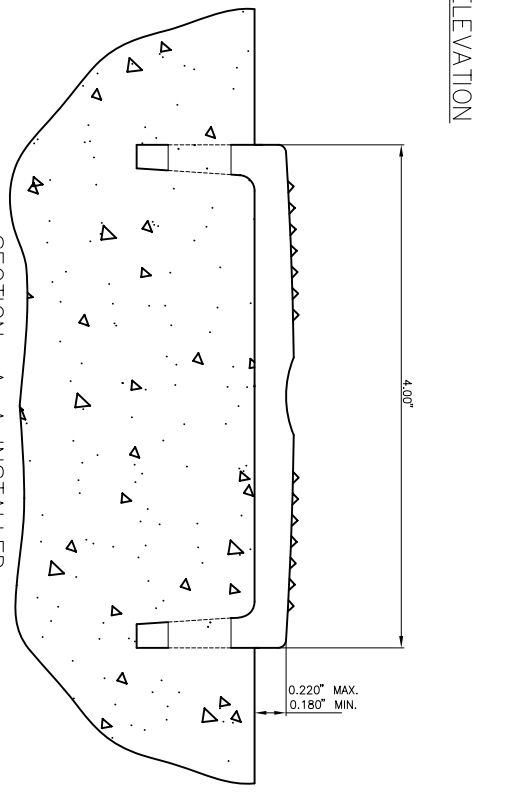
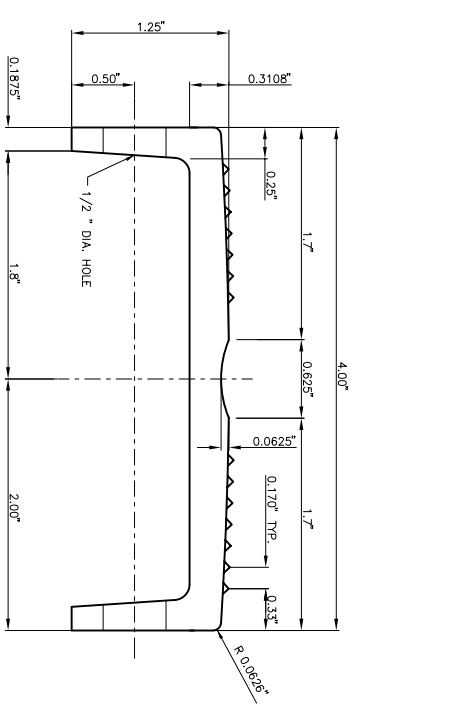
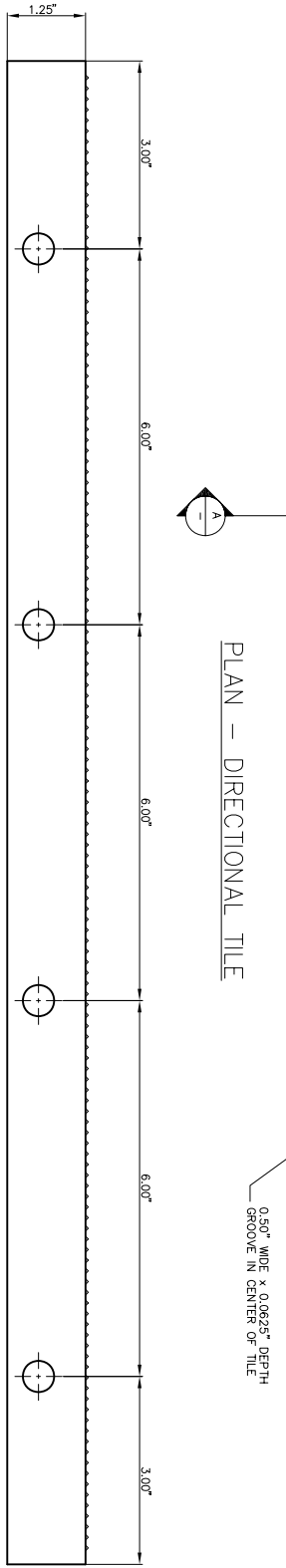
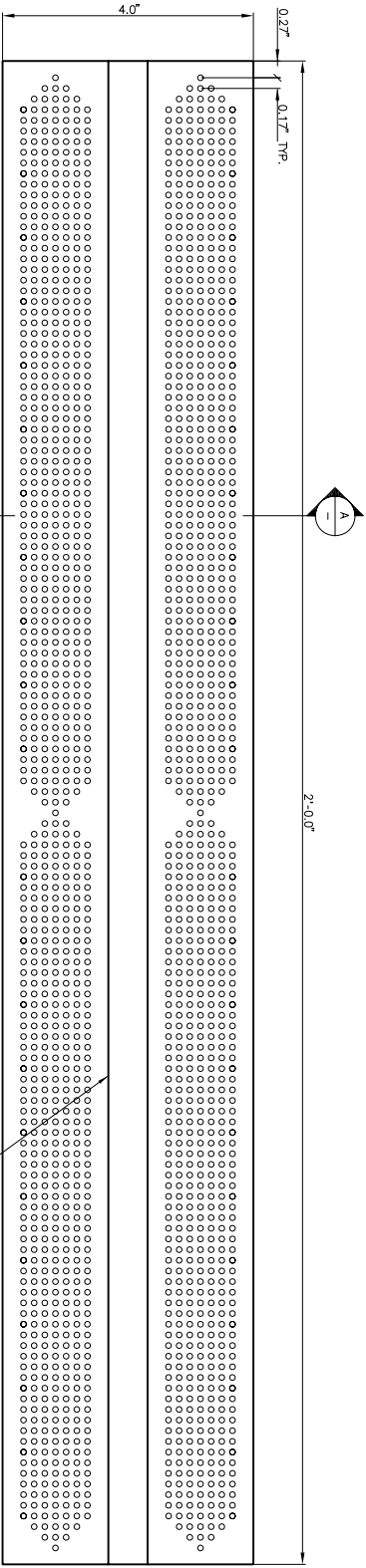
DESIGNED	BY	DATE
	K.S.	08/90

CHECKED	DATE
D.G.	2/22/2006

PROJECT MANAGER	PART No.

TRADE: DETECTABLE WARNING SURFACE ADA-C-GUID  
 MATERIAL: VITRIFIED POLYMER COMPOSITE  
 SUBJECT: **Armor-Tile™ ADA**  
 SOUND AMPLETTING DETECTABLE/TACTILE  
 WARNING SURFACE TILE  
**Armor-Tile™**  
 DETECTABLE/TACTILE  
 WARNING SURFACE GUIDANCE TILE  
 4" x 24" SURFACE APPLIED  
 PLANS AND DETAILS

DRAWING No.	REV. No.
ADA-C-GUID	0



SECTION A-A  
 HALF SCALE

SECTION A-A INSTALLED  
 HALF SCALE