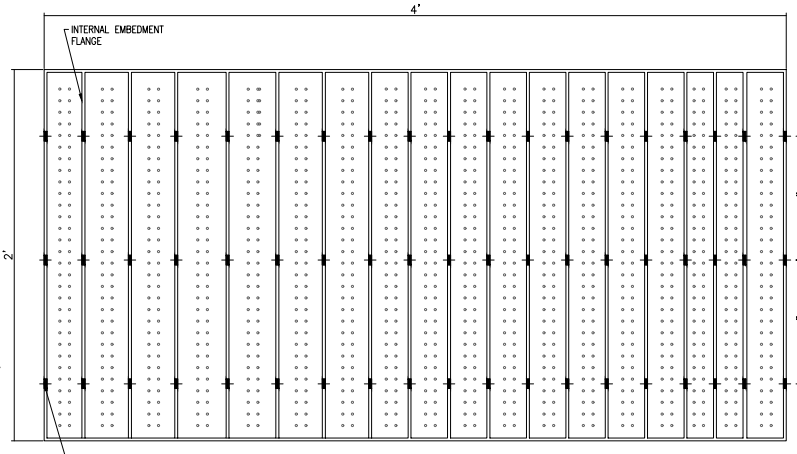
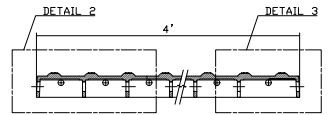


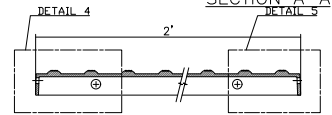
TOP PLAN VIEW



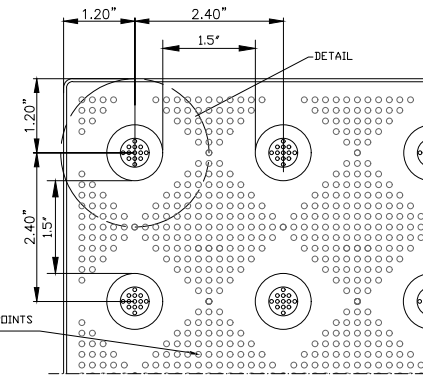
BOTTOM VIEW



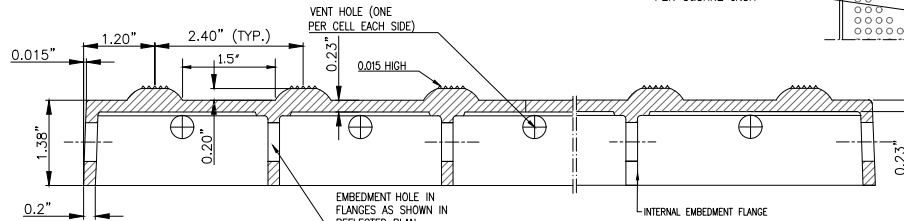
SECTION A-A



SECTION B-B

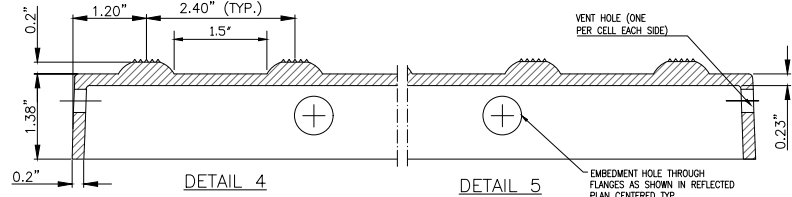


DETAIL 1



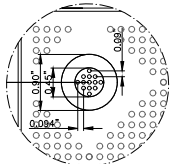
DETAIL 2

DETAIL 3



DETAIL 4

DETAIL 5



DETAIL 6

Armor-Tile



MATERIAL LIST

#	DESCRIPTION	PART No:	QTY
1	ARMOR-TILE	ADA-C-2448W	1

NOTE: ALL DIMENSIONS ARE NOMINAL WITH A TOLERANCE OF ±0.05

No:	DATE	REVISION	APPR.

SCALE: N.T.S.

DESIGNED	K.S.	
DRAWN	M.T.	
DRAWN	M.T.	07/15/2024

DETECTABLE WARNING SURFACE ADA-C-2448W
FIBERGLASS REINFORCED POLYMER COMPOSITE

Armor-Tile™ ADA

Armor-Tile™
DETECTABLE/TACTILE WARNING SURFACE TILE 24"x48" CAST IN PLACE IN-LINE DOME TACTILE TILE PLANS AND DETAILS