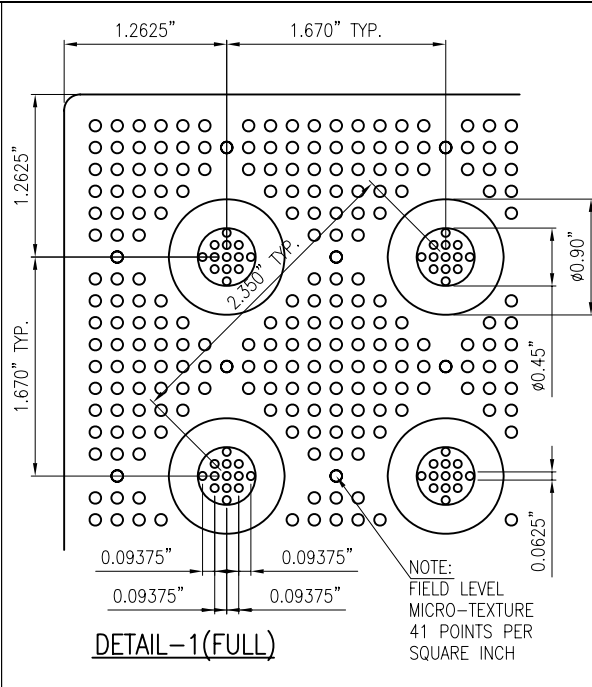
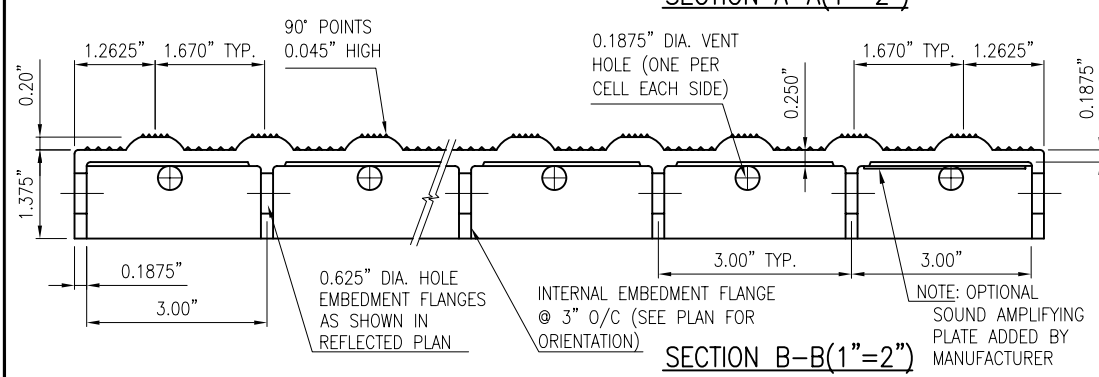
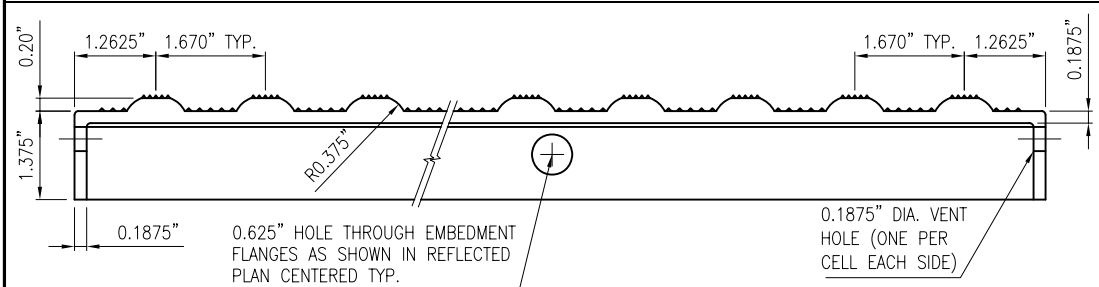
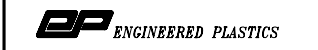


0.1875" DIA. x 0.0625" HIGH MICRO-TEXTURE UNDERSIDE OF TILE

0.625" DIA. HOLES THROUGH EMBEDMENT FLANGES



WWW.Armor-Tile.COM



© 2006 ENGINEERED PLASTICS  
 CONFIDENTIAL AND PROPRIETARY DOCUMENT  
 ANY ONE OR MORE OF THE FOLLOWING PATENTS MAY APPLY  
 U. S. PATENT NO. 5,303,669, 5,775,835, 6,449,790, AND 6,895,622 BS  
 C.D.N. PATENT NO. 2,032,532, 2,070,984  
 US PATENTS PENDING.  
 © KENNETH E. SZEKELY

MATERIAL LIST			
#	DESCRIPTION	PART No:	QTY
1	ARMOR-TILE	ADA-C-2424-**	1

\*\* COLOR CODE  
 YELLOW (YW), RED (RD), BLACK (BK), DARK GREY (DG), LIGHT GREY (LG), WHITE (WH), OCRE YELLOW (OC), BLUE (BL), COLONIAL RED (CR)  
 CUSTOM COLORS AVAILABLE

No:	DATE	REVISION	APPR.

DESIGNED	BY K.S.	DATE 08/90
DRAWN	D.G.	2/22/2006
CHECKED		

PROJECT MANAGER

TRADE DETECTABLE WARNING SURFACE PART No: ADA-C-2424-\*\*

MATERIAL VITRIFIED POLYMER COMPOSITE

SUBJECT

**Armor-Tile ADA**  
 SOUND AMPLIFYING DETECTABLE/TACTILE WARNING SURFACE TILE

PROJECT

**Armor-Tile™**  
 DETECTABLE/TACTILE WARNING SURFACE TILE  
 24" x 24" CAST IN PLACE INLINE DOME TACTILE TILE PLANS AND DETAILS

DRAWING No:	ADA-C-2424	REV. No:	0
-------------	------------	----------	---