

© 2006 ENGINEERED PLASTICS
 CONFIDENTIAL AND PROPRIETARY DOCUMENT
 ANY ONE OR MORE OF THE FOLLOWING
 PATENTS MAY APPLY
 U. S. PATENT NO. 5,303,669, 5,775,835,
 6,449,790, AND 6,895,622 BS
 C.D.N. PATENT NO. 2,032,532, 2,070,984
 US PATENTS PENDING.

© KENNETH E. SZEKELY

MATERIAL LIST

| # | DESCRIPTION | PART No: | QTY |
|---|-------------|------------|-----|
| 1 | ARMOR-TILE | ADA-C-GUID | 1 |

** COLOR CODE
 YELLOW (YW), RED (RD), BLACK (BK),
 DARK GRAY (DG), LIGHT GRAY (LG),
 WHITE (WH), OCHRE YELLOW (OC),
 BLUE (BL), COLONIAL RED (CR)

| No: | DATE | REVISION | APPR. |
|-----|------|----------|-------|
| | | | |

SCALE

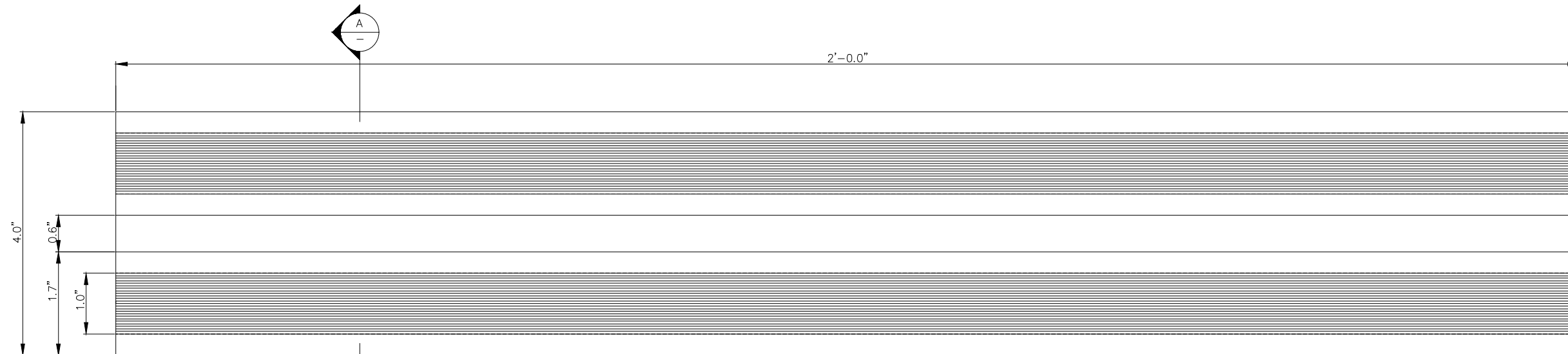
| | | |
|----------|------------|---------------|
| DESIGNED | BY K.S. | DATE 08/90 |
| DRAWN | D.G. | 13/04/2017 |
| CHECKED | | |

| | |
|-------------------------------------|-----------------------------|
| PROJECT MANAGER | |
| TRADE DETECTABLE WARNING SURFACE | PART No: ADG-401 |
| MATERIAL | VITRIFIED POLYMER COMPOSITE |

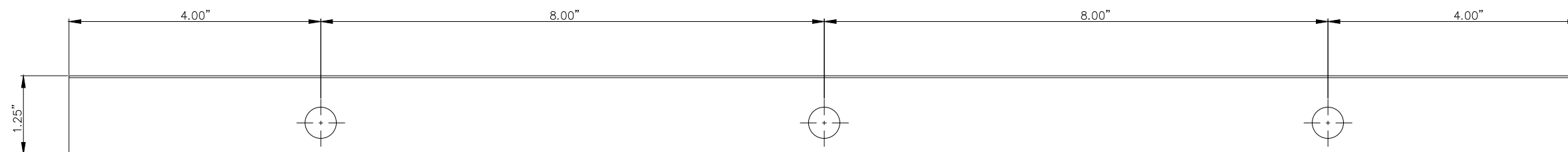
SUBJECT
Armor-Tile™ ADA
 SOUND AMPLIFYING DETECTABLE/TACTILE
 WARNING SURFACE TILE

PROJECT
Armor-Tile™
 DETECTABLE/TACTILE
 WARNING SURFACE GUIDANCE TILE
 4" x 24"
 GUIDANCE TILE
 PLANS AND DETAILS

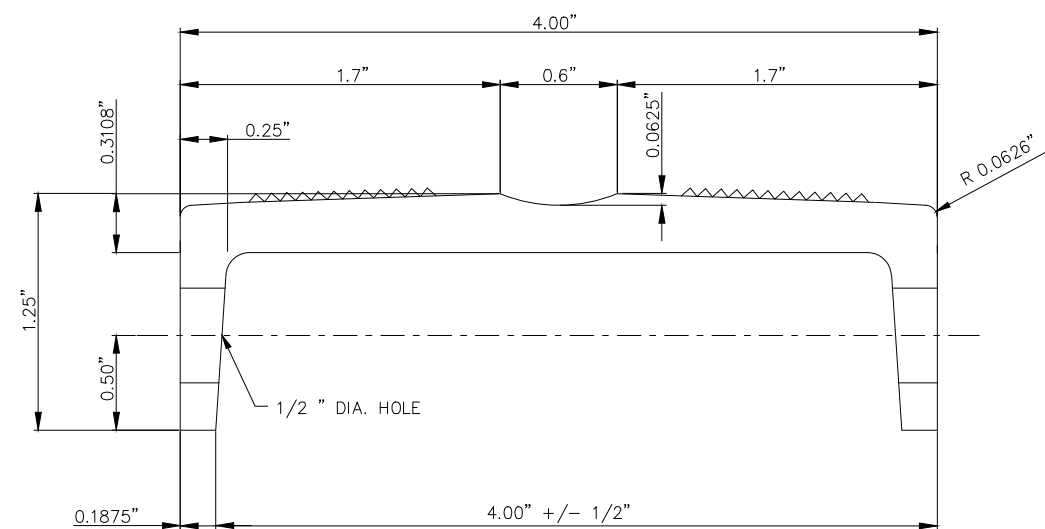
| | |
|-------------|----------|
| DRAWING No: | REV. No: |
| ADA-C-GUID | 0 |



PLAN - DIRECTIONAL TILE

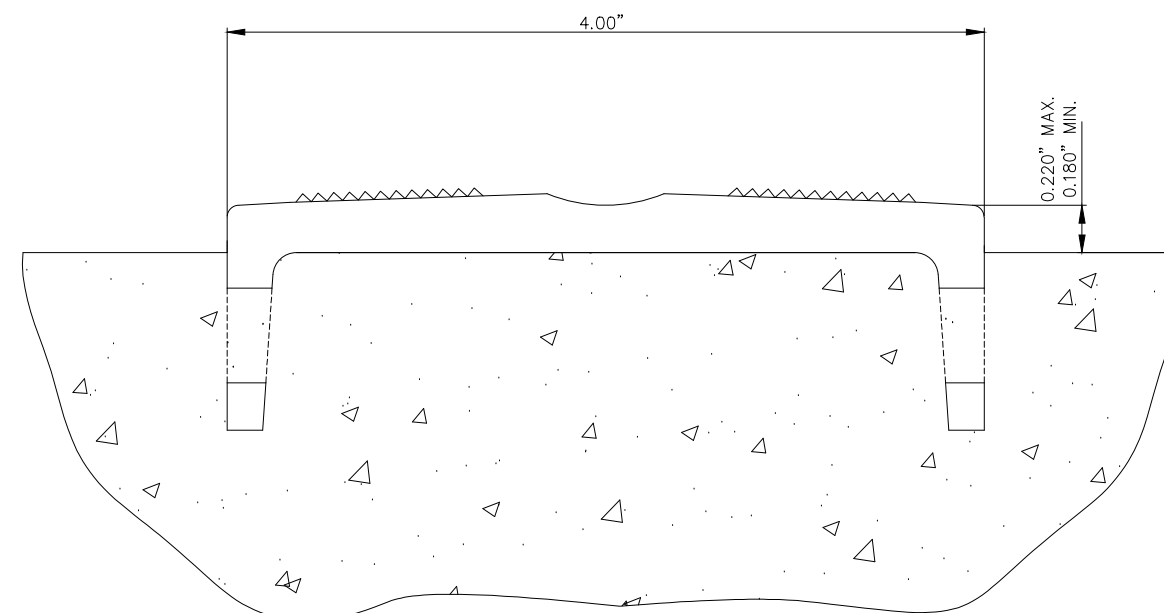


ELEVATION



NOTE: EMBEDMENT FLANGES FLARE OUTWARDS SO THAT TILES MAY NOT BE POSITIONED SIDE BY SIDE

SECTION A-A



SECTION A-A INSTALLED